



Advanced  *Nuclear*

Advanced  *Nuclear*

MECHANICAL / THERMAL INSULATION
REFLECTIVE METALLIC INSULATION (RMI)
MAINTENANCE OUTAGE SERVICES
PENETRATION SEALS
SOUND ATTENUATION
FIRESTOP SYSTEMS - KM-1
PASSIVE FIRE PROTECTION
ASBESTOS & LEAD ABATEMENT
SCAFFOLDING
INDUSTRIAL & COMMERCIAL COATINGS
CERTIFIED ENERGY ASSESSMENTS
SMART SENSORS
RADIANT HEAT SHIELDING



Baton Rouge Office

Baton Rouge, LA 70809
Phone: 1-800-437-0441

Indianapolis Office

Indianapolis, IN 46227
Phone: 317-947-8167

Lancaster Office

Lancaster, PA 17602
Phone: 1-800-437-0441

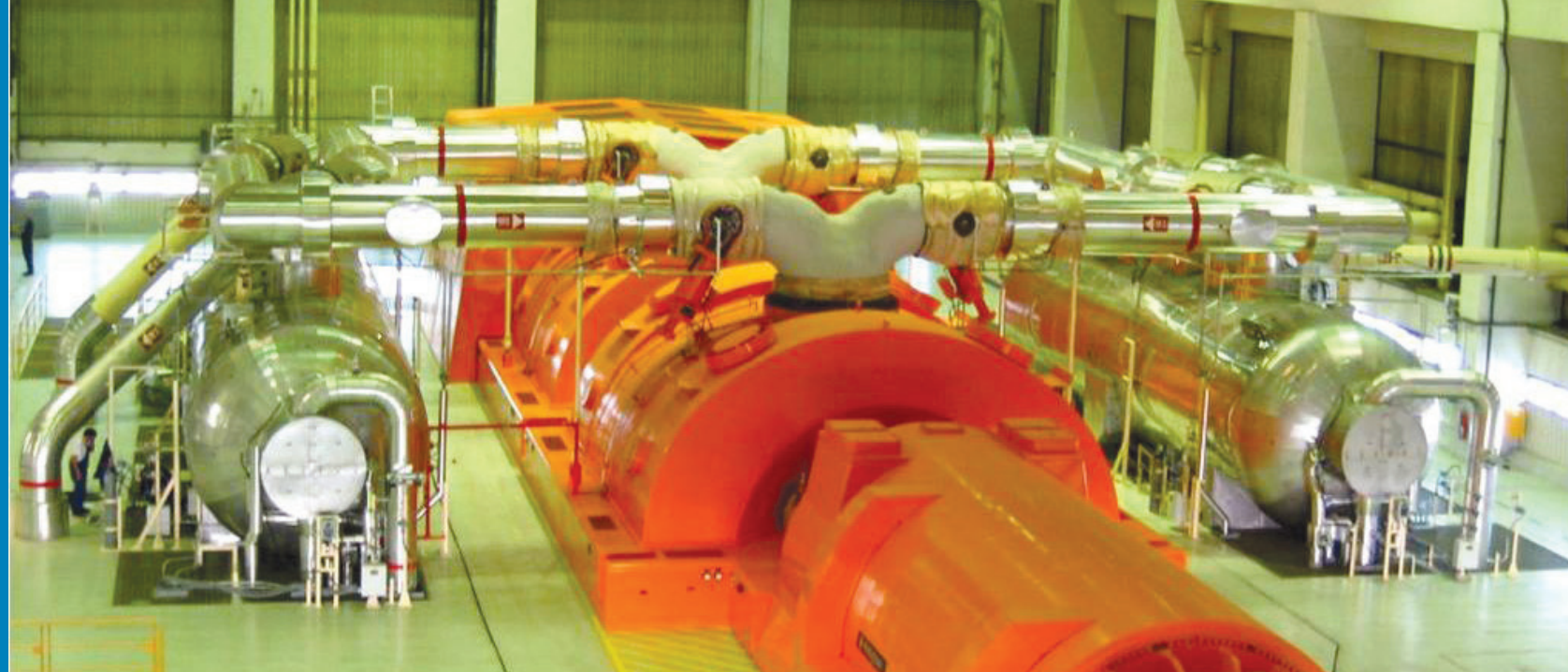
AdvancedNuclear.com



Proud Member of
NIA | National Insulation
Association™



DEMANDING CHALLENGES. PROFESSIONAL RESULTS.



The full-service specialty contractor that's
up to your most demanding challenge.

Industrial and commercial customers rely on Advanced Nuclear to consistently deliver high quality services – Safely, proficiently, and cost effectively. Advanced Nuclear is your true full-service contractor.

Advanced Nuclear operates through an integrated network of contracting offices across North America. We are highly experienced in a variety of specialized and challenging areas.

Advanced Nuclear is your single source supplier to provide solutions to your specialty contracting needs.

Project success every step of the way

At Advanced Nuclear, our systems, products, and equipment are leading edge. Most importantly, you need the right people at the controls. Our extensively trained craftsmen possess the technical expertise, motivation, dedication, and commitment to ensure customer success and satisfaction.

Our offices are linked by integrated, sophisticated information technology, supported by state-of-the-art systems and programs. Our ISO 9001 compliant QA/ QC program ensures exceptional project management, scheduling, inventory, and job control.

Commitment to safety

Advanced Nuclear core values and comprehensive approach to safety allows us to consistently outperform our industry peers in all standard Environmental Health & Safety Metrics.

Our Financial Strength

Advanced Nuclear invests back into the growth of the company to strengthen the resources needed to satisfy the needs of our Customers, delivering exceptional service and complete client satisfaction. Our unmatched financial strength provides virtually unlimited bonding capacity, prompt supplier and employee benefit payments with investment into state-of-the-art services.

Part of Irex Contracting Group

Advanced Nuclear is a subsidiary of the Irex Contracting Group, a North American network of leading-edge, specialty focused contractors.

Our #1 specialty is complete satisfaction

A commitment to Total Quality is one of the hallmarks of Advanced Nuclear. Our consistent and superior execution enables us to continually meet critical project schedules.

When it's time to make a choice, make the logical choice...Advanced Nuclear.

Advanced Nuclear supplies and installs all facets of mechanical insulation serving the nuclear industry. Our experienced management team and skilled craftspeople work closely with design engineers, facility/maintenance managers, and owners to provide unique, specialty solutions to our customers. We are able to offer a complete array of services for a broad spectrum of applications across all facets of the industry. At Advanced Nuclear, no job is too big or too small. We are the contractor of choice with the expertise and experience to get your job done safely, on budget, and on time.

Through our strategic alliance with Darchem/Esterline, Advanced Nuclear offers DARMETT™ Reflective Metallic Insulation (RMI). The all-metallic insulation system controls heat loss and temperature gradients on primary circuit vessels and associated equipment and pipework. Principle features include ease of removability & replacement, corrosion resistance, fewer equipment operational difficulties, no health risk to maintenance personnel, and long-life performance.

We are experts in the specialized and challenging Nuclear Services industry and are equipped to be your single-source provider in several disciplines. We are committed to exceeding expectations and delivering quality, productivity, and safety for all Nuclear Services that we provide.

Advanced Nuclear is a recognized industry leader in the installation of UL-classified and FM-approved passive fire stop systems. When you choose us, you're selecting a premier installer of passive fire protection systems for all your through penetrations, top of wall, edge of slab, electrical separation criteria and critical system component protection.

We have vast experience in asbestos and lead abatement, as well as hazardous material remediation. By using state-of-the-art technologies and certified and/or licensed personnel with training that exceeds regulatory requirements, we are able to execute any size project safely and efficiently. Whether it's a glove bag on a flange or the demolition a power plant, Advanced Nuclear has both the resources and expertise to get the job done right.

Advanced Nuclear provides a wide array of scaffolding. From design and full project management to expert erection/dismantling, you can count on Advanced Nuclear to provide comprehensive solutions to accommodate your access needs at competitive prices to fit your budget.

We also have experts in abrasive blasting and applying various industrial and commercial coatings to exacting standards. They include intumescent and cementitious fireproofing, internal linings and external coatings, and painting either on site or at one of our shops as part of fabrication.

As the premier installation and support service provider of mechanical insulation, asbestos/ lead abatement, energy appraisals, reflective metallic insulation (RMI) & fire protection services to Nuclear facilities throughout North America, Advanced Nuclear should be your first choice to provide solutions to keep your project on track. Let Advanced Nuclear demonstrate how we can be your contractor of choice with the expertise and experience to get your job done safely, on budget, and on time.

